

Government of karnataka

Department of Mines & Geology (Mineral)

Divisional office:

Office of the Deputy Director,
Department of Mines & geology,
Railway station road, Gandhinagar,
Tumkur-572102

Phone No: 0816-2273023

E-mail ID: ddtum-dmg-ka@nic.in

Website: <http://khanija.kar.ncode.in>.

About the Department.

The Department of Mines and Geology is operational since more than 110 years. The erstwhile Mysore Geological Department was established in the year 1894 with the objective of Geological and structural mapping of the then Mysore State. Many mineral based industries in the State of Karnataka have been established on the basis of the Geological investigations.

Functions and Objectives of DMG

- Search and exploration of mineral wealth of the State by adopting State-of-the-art exploration techniques.
- Increase States' revenue through higher production of minerals & their scientific development.
- Encourage value addition of minerals through promotion of mineral based industries in the State.
- Provide infrastructures facilities viz road, electricity etc. to mines and quarries.

The functions of the department are:

- a) Geological mapping
- b) Structure mapping
- c) Mineral resources estimation
- d) Determine quality/grade of mineral deposits

Diamond drilling unit helps the Geologists in knowing the extension of mineral deposit at depth and also helps in collecting core samples from different depths below ground surface. Chemical laboratory at Director's office and also chemical laboratories at Mysore, Chitradurga, Dharward, Belgaum, Bellary and Gulbarga carry out analysis of mineral samples. In the metallurgical laboratory at Bangalore, ore beneficiation is being carried out. Applications for mining and prospecting license are being processed at Director's office and M.L and P.L are granted. Application for quarry leases for ornamental stones (specified minor mineral) are processed at Director's office and leases are granted/executed. At district level, quarry leases for building stones (non-specified minor mineral) are granted by the Deputy Director/Senior Geologists.

Mineral Investigation & Mineral Administration

a) Mineral Investigation:-

- Survey and assessment of Ferrous minerals
- Investigation of Ornamental stones
- Survey for lime and lime stones
- Investigation for refractory minerals

- Exploration for precious and semi-precious minerals such as gold, silver platinum etc.,
- Environmental impact studies

b) Mineral Administration:-

- Sanction of specified minor mineral leases such as ornamental granites
- Sanction of non-specified minor mineral leases
- Inspection of mines and quarries
- Issue of inspection and audit reports
- Collection of royalty/dead rent
- Checking unauthorized mining/quarrying and illegal transportation of minerals
- Sanction of Prospecting and mining leases.

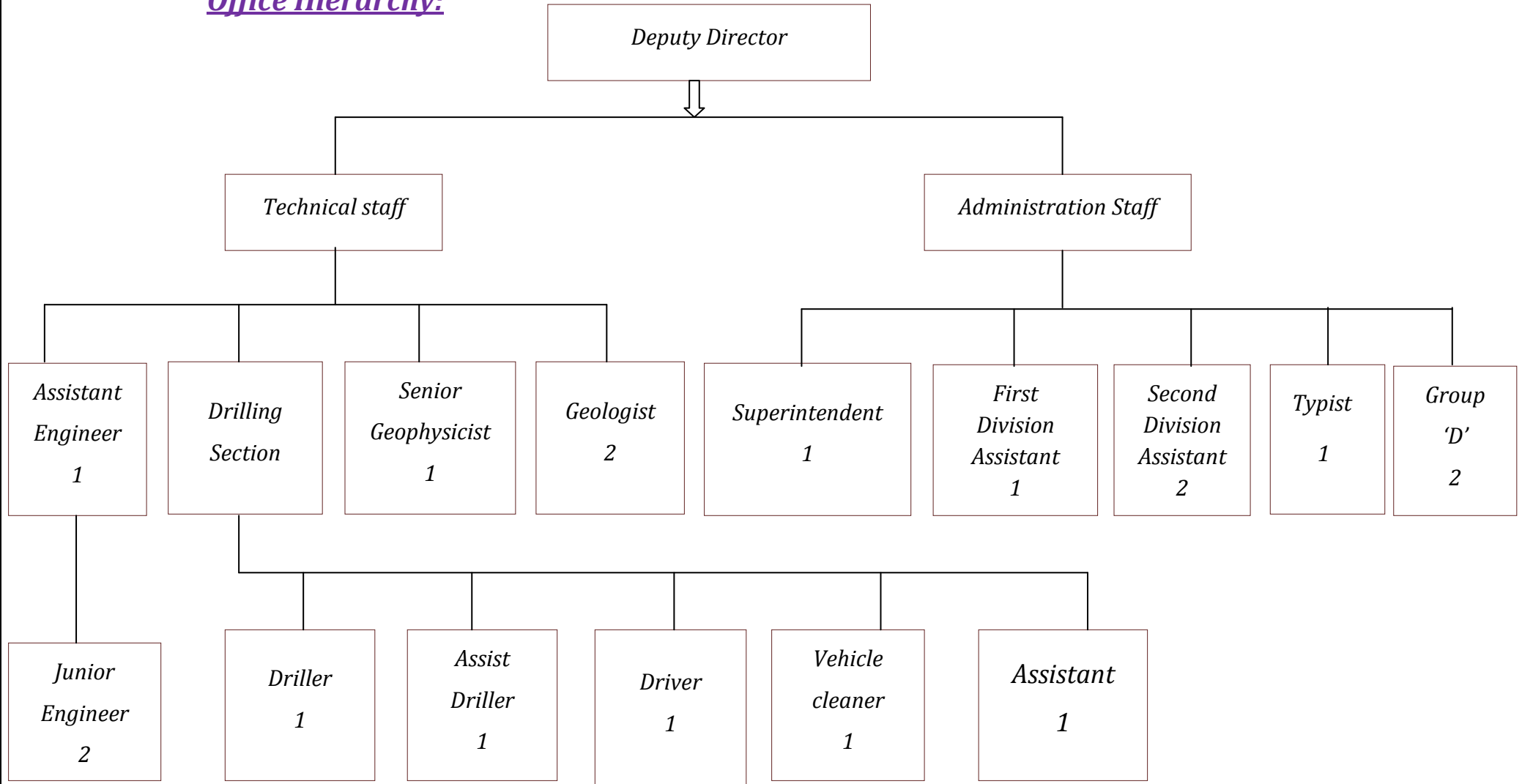
Services

- Sanction leases for prospecting and mining major minerals
- Sanction leases for ornamental stones
- Sanction leases for building material
- Give feasibility report establishing mineral based industries in regard to availability of raw material
- Analyze mineral samples
- Beneficiation of minerals

Mineral Resources in Tumkur District.

The district is endowed with rich deposits of minerals of economic importance like iron and manganese. The other mineral deposits that occur are, Limestone, Clay, Soapstone, Gold and Quartz. Iron ore occurs in the Talukas of "Chikkanayakanahalli, Tiptur and Gubbi. The iron content ranging from 50 to 60%. Thirtharampura, Janehar Block, Ashrihal, Rajathadripura surrounding areas, are some of the important localities where Iron Ore deposits of hematite iron ore occurs. The estimated quantity of the hematite ore reserve in the district is about 800 million tonnes. Extensive deposits of medium grade manganese ore occur as lenses or pockets in decomposed phyllitic schist underlying the ferruginous quartzite of the several synclinals of the district. Indications of ancient workings for gold are noticed near Bellara and Ajjenahalli of Bukkapatna S.F, in Sira and Chikkanayakanahalli taluk. Economically important deposits of Limestone, Dolomite, White clay, and Manganese found at Tiptur, Chikkanayakanahalli and Gubbi taluk. Quartz are found in packets of certain areas of Tiptur and Chikkanayakanahalli Taluks.

Office Hierarchy:



Details of the mining Leases in Tumkur District

A. Major Minerals

Sl No	Talik	Iron ore/ Manganese	Clay	Quartz	Soap Stone	Lime Stone/ Dolomite	Gold	Total
1	Chikkanayakanahalli	20	1	4	4	6	0	35
2	Gubbi	7	2	2	-	1	0	12
3	Tiptur	4	-	1	-	-	-	5
4	Kunigal	-	-	1	-	-	-	1
5	Sira	-	-	-	-	-	1	1
	Total	31	03	08	04	07	01	54

B. Minor Mineral

Taluk wise Non-Specified (Building Stone) Leases	
Taluk	No. of leases
Chikkanayakanahalli	1
Kunigal	13
Tumkur	39
Koratagere	13
Madhugiri	3
Sira	16
Tiptur	2
Gubbi	0
Total	87

Taluk wise Specified (Ornamental Stone) Leases	
Taluk	No. of Leases
Chikkanayakanahalli	0
Kunigal	9
Tumkur	6
Koratagere	0
Madhugiri	1
Sira	3
Tiptur	1
Gubbi	1
Total	21

Geology Map :

